

# Central South Wales Challenge

## By schools, for schools

Lead Practitioner & Foundation Phase Hub Opportunities - April 2021



Consortium Canolbarth y De  
Central South Consortium

Gwasanaeth Addysg ar y Cyd  
Joint Education Service



HER CANOL DE CYMRU  
CENTRAL SOUTH WALES CHALLENGE



## Contents

	Page
Central South Wales Challenge (CSWC)	2 - 4
Foundation Phase	5
Pedagogy and Teaching & Learning	6
Curriculum for Wales	6
Digital Learning	7
Expressive Arts	8
Health & Well-being	9
Humanities	9
Languages, Literacy & Communication	10-11
Mathematics & Numeracy	12
Science & Technology	13-14
Contact Us	15

## The Central South Wales Challenge: 'By schools, for schools'

The Central South Wales Challenge (CSWC) is the partnership of all schools and settings across the CSC region working together to develop a self-improving system.

The CSWC model is designed to be:

- consistent across the region
- school led
- informed by prior knowledge of a self-improving school system
- focussed on providing value for money
- responsive to the changing needs of schools.

The CSWC includes a number of components that support the self-improving school system. Each component plays a key role in ensuring that all schools and settings in the region can access appropriate professional learning (PL) and support.

Schools and settings should engage with the components and PL activities that best support their school improvement priorities.

The CSWC model and its individual components are evaluated and refined annually, ensuring the evolving needs of schools within the region and needs of the wider system are considered.

CSC PL activities are evaluated using the [Kirkpatrick model](#).

## The Central South Wales Challenge 2021-2022

In order to meet the current and evolving needs of schools and the wider system within the vision and aims of the CSWC, and the ongoing challenges related to COVID, a refined structure has been developed, see Diagram 1 (page 3).

The curriculum reform agenda is integrated across the CSWC, including AOLE leads as lead practitioners. The components are defined within two main areas:

- Regional professional learning collaborations.
- Regional professional learning opportunities.

This recognises the different focus and purpose of the components and activities within the model as detailed in Diagram 1.

Regional professional learning collaboration components:

- School Improvement Groups (SIGs)
- Clusters
- Peer Partnership
- School Leader and Practitioner Networks

Focus and membership are related to the different collaboration components as detailed in Diagram 1.

- Regional professional learning opportunities:
- Lead Practitioners and Foundation Phase Hubs
- School to School Partnerships
- Leadership Development
- NQT Induction

The professional learning opportunities within these components are planned, developed and delivered by school practitioners and CSC staff.

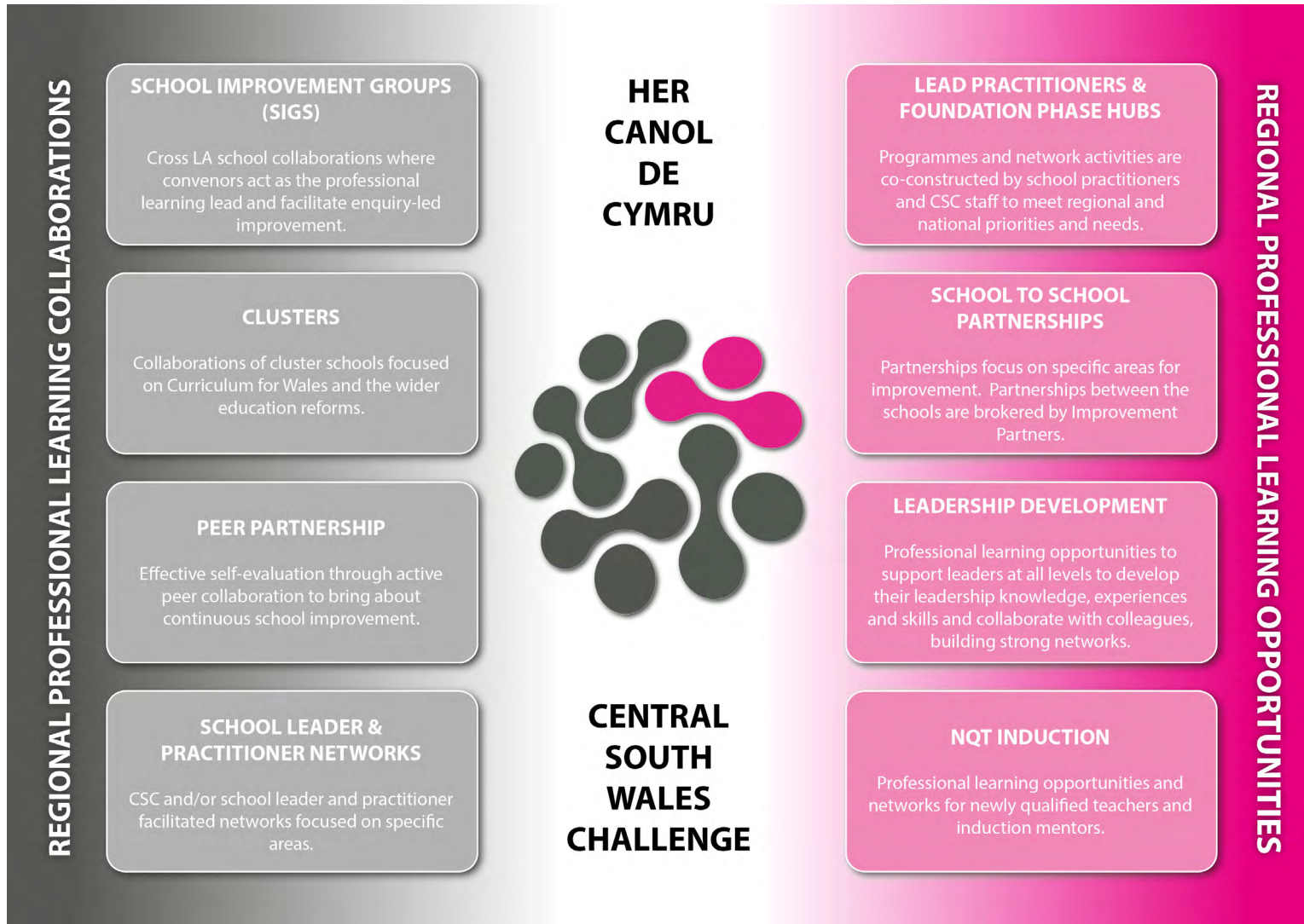


Diagram 1: Central South Wales Challenge 2021 - 22

## Funding 2021-2022

The funding for the CSWC model supports participation of all schools in regional professional learning as their school improvement priorities deem most appropriate.

There is no charge to schools for engagement in regional professional learning opportunities within the CSWC.

A formula will be used to distribute the collaboration funding, which includes a lump sum for all schools and also an amount per FTE teacher. Further information on this will be shared as soon as the grant terms and conditions are confirmed by Welsh Government.

The Welsh medium primary and secondary networks, Y Ffed and Gyda'n Gilydd, and the special schools' network will continue to receive additional funding to facilitate professional learning opportunities to meet the specific needs of their sectors. These are subject to the same evaluation as CSC facilitated networks.

All lead practitioners and foundation phase hubs will be funded at a standard rate of £300 per day.

Leadership development and NQT Induction are funded outside of this model as are dependent on specific grants streams and numbers of participants.

## CSC Lead Practitioners and Foundation Phase Hubs

Lead practitioners and foundation phase hubs continue as a central component of the CSWC model. Their role is to work in partnership with the CSC team and practitioners from across the region to co-construct professional learning activities and support that may include:

- Designing, developing and delivering professional learning, including online content
- Planning and co-facilitating network meetings
- Creating resources and materials
- Reading and research
- Evaluating professional learning activities using the Kirkpatrick model

## Applying to be a lead practitioner or foundation phase hub

All CSC schools and practitioners have the opportunity to apply to be a lead practitioner or foundation phase hub. **Applications from all phases and sectors are welcomed as appropriate to the specific roles.** Details of each of the roles are outlined in the following pages.

Please apply for roles via the [online application form](#)  
NB. Multiple roles may be applied for by a school and practitioner.

All applications must be received by mid-day on Friday 30th April. Applications will be considered by a representative panel week commencing 17th May 2022.

Successful applicants will be notified week commencing 24th May 2022.



## Foundation Phase Opportunities:

Role	Focus	Activity	Days	Total Funding
Foundation Phase Hub School	Support schools with the development of foundation phase pedagogy	<ul style="list-style-type: none"><li>Developing professional e-learning programmes</li><li>Creating online resources and materials</li><li>Reading and research</li><li>Co-constructing &amp; facilitating online collaborative network sessions</li><li>School to school support</li></ul>	35 days Jun 21 - Mar 22	£10,500
Foundation Phase Lead Practitioner: pedagogy & practice	Support schools with the development of foundation phase pedagogy	<ul style="list-style-type: none"><li>Coordinating and developing professional e-learning programmes</li><li>Coordinating schools to participate in focused projects</li><li>Creating online resources and materials</li><li>Reading and research</li><li>Leading online collaborative network sessions</li><li>School to school support</li></ul>	1 day per week Sep 21 - Mar 22	£7,800

To apply for any of the above roles, please complete the [online application](#).

NB. Applications close mid-day 30 April 2021. Please gain permission from your headteacher before applying.

## Lead Practitioner Opportunities

Role	Focus	Activities	Days	Total Funding
<b>Pedagogy and Teaching &amp; Learning:</b>				
Enquiry	Support schools to develop enquiry practice		1 day per week Sep 21 - Mar 22	£7,800
Assessment and Progression	Develop approaches for assessment and progression		2 days per week Sep 21 - Mar 22	£15,600
Pedagogy - Primary	Support schools to develop pedagogy and learning design	<ul style="list-style-type: none"> <li>Coordinating and developing professional e-learning programmes</li> <li>Creating online resources and materials</li> <li>Reading and research</li> <li>Planning &amp; facilitating network meetings</li> <li>Evaluating PL activities</li> </ul>	2 days per week Sep 21 - Mar 22	£15,600
Pedagogy - Secondary	Support schools to develop pedagogy and learning design		2 days per week Sep - Mar	£15,600
Leadership of Learning - Primary	Develop approaches to leading learning		1 day per week Sep 21 - Mar 22	£7,800
Leadership of Learning - Secondary	Develop approaches to leading learning		1 day per week Sep 21 - Mar 22	£7,800
<b>Curriculum for Wales: Relationships and Sexuality Education (RSE)</b>				
Primary RSE		<ul style="list-style-type: none"> <li>Coordinating and developing professional e-learning programmes</li> <li>Creating online resources and materials</li> <li>Reading and research</li> <li>Planning &amp; facilitating network meetings</li> </ul>	6 days Jun 21 - Mar 22	£1,800
Secondary RSE	To support schools to prepare for the RSE curriculum		6 days Jun 21 - Mar 22	£1,800
Special / PRU RSE			6 days Jun 21 - Mar 22	£1,800



## Lead Practitioner Opportunities

Role	Focus	Activity	Days	Total Funding
<b>Digital Learning:</b>				
Leadership of digital learning - Primary (level 1)	Support schools beginning to develop the leadership of digital learning	<ul style="list-style-type: none"> <li>Co-constructing &amp; facilitating online PL sessions</li> <li>Creating online resources and materials</li> </ul>	10 days Jun 21 - Mar 22	£3,000
Leadership of digital learning - Primary (level 2)	Support schools to further develop the leadership of digital learning	<ul style="list-style-type: none"> <li>Reading and research</li> </ul>	10 days Jun 21 - Mar 22	£3,000
Digital Learning - Welsh medium	Support the facilitation of established termly network meetings through the medium of Welsh	<ul style="list-style-type: none"> <li>Co-constructing &amp; facilitating online meetings</li> <li>Creating online resources and materials</li> <li>Leading Welsh medium discussion groups</li> </ul>	15 days Jun 21 - Mar 22	£4,500
DCF - Rich task resource development	Coordinate the development and co-construction of DCF classroom resources.	<ul style="list-style-type: none"> <li>Coordinate project with school practitioners</li> <li>Co-construct online resources with project group</li> </ul>	15 days Jun 21 - Mar 22	£4,500
DCF - Collaborative technologies project	Coordinate the CSC Collaborative Technologies project	<ul style="list-style-type: none"> <li>Coordinating a group of practitioners to:</li> <li>Researching the use of collaborative technologies</li> <li>Identifying opportunities to enhance learning and teaching</li> <li>Recommending how to connect classrooms locally, nationally and internationally</li> <li>Sharing findings across the region</li> </ul>	15 days Jun 21 - Mar 22	£4,500
DCF Lead Practitioner	Support schools to develop DCF across the curriculum	<ul style="list-style-type: none"> <li>Co-constructing &amp; facilitating online PL sessions</li> <li>Creating online resources and materials</li> <li>Reading and research</li> <li>Providing bespoke support for schools</li> </ul>	3 days per week Sep 21 - Mar 22	£23,400

To apply for any of the above roles, please complete the [online application](#).

NB. Applications close mid-day 30 April 2021. Please gain permission from your headteacher before applying.



## Lead Practitioner Opportunities

Role	Focus	Activity	Days	Total Funding
<b>Expressive Arts:</b>				
Secondary Art & Design	Facilitate networks of practitioners to consider PL requirements for the subject area	<ul style="list-style-type: none"> <li>Coordinating &amp; deliver online collaborative network sessions.</li> <li>Sharing professional learning resources and materials to support the subject at all relevant stages.</li> </ul>	6 days Jun 21 - Mar 22	£1,800
Secondary Drama			6 days Jun 21 - Mar 22	£1,800
Secondary Music			6 days Jun 21 - Mar 22	£1,800
Secondary Film & Digital Media			6 days Jun 21 - Mar 22	£1,800
Secondary Dance			6 days Jun 21 - Mar 22	£1,800
Film & Digital Media - teaching resources development	Produce PL resources to support the planning and delivery of the specific discipline	<ul style="list-style-type: none"> <li>Creating resources and materials</li> <li>Contributing to the creation of multimedia artefacts e.g. video, animation etc.</li> <li>Reading and research</li> </ul>	6 days Jun 21 - Mar 22	£1,800
Dance - Primary teaching resources development			6 days Jun 21 - Mar 22	£1,800
Dance - Secondary teaching resources development			6 days Jun 21 - Mar 22	£1,800

To apply for any of the above roles, please complete the [online application](#).

NB. Applications close mid-day 30 April 2021. Please gain permission from your headteacher before applying.

## Lead Practitioner Opportunities

Role	Focus	Activity	Days	Total Funding
<b>Health &amp; Well-being:</b>				
Secondary Physical Education	Facilitate networks of practitioners to consider PL requirements for the subject area	<ul style="list-style-type: none"> <li>Developing professional learning resources and materials to support the subject at all relevant stages.</li> <li>Coordinating &amp; deliver online collaborative network sessions</li> </ul>	6 days Jun 21 - Mar 22	£1,800
<b>Humanities:</b>				
Secondary Business Studies	Facilitate networks of practitioners to consider PL requirements for the subject area	<ul style="list-style-type: none"> <li>Developing professional learning resources and materials to support the subject at all relevant stages.</li> <li>Coordinating &amp; deliver online collaborative network sessions</li> </ul>	6 days Jun 21 - Mar 22	£1,800
Secondary Geography			6 days Jun 21 - Mar 22	£1,800
Secondary History			6 days Jun 21 - Mar 22	£1,800
Secondary Psychology			6 days Jun 21 - Mar 22	£1,800
Secondary Religious Studies			6 days Jun 21 - Mar 22	£1,800
Secondary Sociology			6 days Jun 21 - Mar 22	£1,800
Foundation and Advanced Welsh Baccalaureate / Skills Challenge Certificate			6 days Jun 21 - Mar 22	£1,800

**To apply for any of the above roles, please complete the [online application](#).**

*NB. Applications close mid-day 30 April 2021. Please gain permission from your headteacher before applying.*

## Lead Practitioner Opportunities

Role	Focus	Activity	Days	Total Funding
<b>Languages, Literacy &amp; Communication:</b>				
Reading Reconsidered trainer- Primary	Support the delivery of 'Reading Reconsidered' training	<ul style="list-style-type: none"> <li>Presenting school-based approaches</li> <li>Co-facilitation and discussion in training</li> <li>Creating resources to exemplify strategies</li> </ul>	10 days Jun 21 - Mar 22	£3,000
Reading Reconsidered trainer - Secondary	Support the delivery of 'Reading Reconsidered' training	<ul style="list-style-type: none"> <li>Presenting school-based approaches</li> <li>Co-facilitation and discussion in training</li> <li>Creating resources to exemplify strategies</li> </ul>	10 days Jun 21 - Mar 22	£3,000
Writing - Primary	Exemplify the CSC writing continuum through the production of resources	<ul style="list-style-type: none"> <li>Creating resources and materials</li> <li>Contributing to the creation of multimedia artefacts e.g. podcasts</li> <li>Reading and research</li> </ul>	15 days Jun 21 - Mar 22	£4,500
Writing - Secondary	Exemplify the CSC writing continuum through the production of resources	<ul style="list-style-type: none"> <li>Creating resources and materials</li> <li>Contributing to the creation of multimedia artefacts e.g. podcast</li> <li>Reading and research</li> </ul>	15 days Jun 21 - Mar 22	£4,500
Reading across the curriculum - Secondary	Support schools to develop reading skills beyond the English classroom	<ul style="list-style-type: none"> <li>Producing e-learning resources</li> <li>Presenting at network meetings</li> </ul>	6 days Jun 21 - Mar 22	£1,800
Reading - Primary	Support schools to develop a rigorous reading curriculum	<ul style="list-style-type: none"> <li>Contributing to the development of professional e-learning resources</li> <li>Create classroom-based materials</li> </ul>	6 days Jun 21 - Mar 22	£1,800
Reading - Secondary	Support schools to develop a rigorous reading curriculum	<ul style="list-style-type: none"> <li>Contributing to the development of professional e-learning resources</li> <li>Creating classroom-based materials</li> </ul>	6 days Jun 21 - Mar 22	£1,800

To apply for any of the above roles, please complete the [online application](#).

NB. Applications close mid-day 30 April 2021. Please gain permission from your headteacher before applying.

## Lead Practitioner Opportunities

Role	Focus	Activity	Days	Total Funding
<b>Languages, Literacy &amp; Communication cont'd:</b>				
Welsh second language - Secondary	Support the development of Welsh second language in English medium secondary schools	<ul style="list-style-type: none"> <li>• Planning &amp; facilitating network meetings</li> <li>• Creating resources</li> <li>• Reading and research</li> <li>• Evaluating PL activities</li> </ul>	6 days Jun 21 - Mar 22	£1,800
International Languages: KS2-3 transition	Establish a regional pilot group to explore cross-phase working and transition for International Languages		6 days Jun 21 - Mar 22	£1,800
Languages Connect Us - Primary	Establish a regional pilot group to develop exemplification of the statement of what matters: 'Languages connect us'.	<ul style="list-style-type: none"> <li>• Producing regional guidance, case studies and exemplification in preparation for Curriculum for Wales</li> </ul>	6 days Jun 21 - Mar 22	£1,800
Languages Connect Us - Secondary	Establish a regional pilot group to develop exemplification of the statement of what matters: 'Languages connect us'.		6 days Jun 21 - Mar 22	£1,800

To apply for any of the above roles, please complete the [online application](#).

NB. Applications close mid-day 30 April 2021. Please gain permission from your headteacher before applying.

## Lead Practitioner Opportunities

Role	Focus	Activity	Days	Total Funding
<b>Mathematics &amp; Numeracy:</b>				
Using manipulatives - Primary	Support schools to develop the use of manipulatives in the mathematics curriculum		10 days Jun 21 - Mar 22	£3,000
Designing and evaluating effective interventions - Primary	Support schools to design bespoke interventions in the mathematics curriculum		10 days Jun 21 - Mar 22	£3,000
Developing mathematical modelling - KS2/3	Support schools to develop modelling strategies		10 days Jun 21 - Mar 22	£3,000
Mastery in mathematics - Primary	Support schools to develop mastery approaches to the mathematics curriculum	<ul style="list-style-type: none"> <li>Coordinating and developing professional e-learning programmes</li> <li>Creating online resources and materials</li> <li>Facilitating working groups of practitioners</li> </ul>	6 days Jun 21 - Mar 22	£1,800
Using technology in mathematics - Secondary	Support the use of technology in the mathematics curriculum		10 days Jun 21 - Mar 22	£3,000
Designing and evaluating effective interventions - Secondary	Support schools to design bespoke interventions in the mathematics curriculum		10 days Jun 21 - Mar 22	£3,000
Literacy in mathematics - Secondary	Support schools to develop mathematical literacy		6 days Jun 21 - Mar 22	£1,800
A-level Mathematics	Support new / inexperienced teachers to develop the pedagogy of A-level mathematics		10 days Jun 21 - Mar 22	£3,000

**To apply for any of the above roles, please complete the [online application](#).**

*NB. Applications close mid-day 30 April 2021. Please gain permission from your headteacher before applying.*

## Lead Practitioner Opportunities

Role	Focus	Activity	Days	Total Funding
<b>Science &amp; Technology:</b>				
Early years scientific thinking	Support schools to develop scientific thinking in early years		10 days Jun 21 - Mar 22	£3,000
Literacy in STEM	Support schools to develop the STEM curriculum through literacy		10 days Jun 21 - Mar 22	£3,000
Primary D&T	Ensure progression in understanding materials and their use	<ul style="list-style-type: none"> <li>Coordinating and developing professional e-learning programmes</li> <li>Creating online resources and materials</li> <li>Facilitating working groups of practitioners</li> </ul>	6 days Jun 21 - Mar 22	£1,800
Primary computer science	Support school practitioners to understand computing 'in the real world'		6 days Jun 21 - Mar 22	£1,800
Primary Science Quality Mark	Support schools to achieve the Primary Science Quality Mark		6 days Jun 21 - Mar 22	£1,800
Primary science	Support schools to develop effective progression in science		6 days Jun 21 - Mar 22	£1,800
PRU/Special Schools STEM Network	Support PRU and special schools to develop the STEM curriculum	<ul style="list-style-type: none"> <li>Developing professional learning resources and materials to support STEM subjects at all relevant stages.</li> <li>Coordinate &amp; delivering online collaborative network sessions</li> </ul>	6 days Jun 21 - Mar 22	£1,800
Secondary A-level STEM Network	Support schools to develop the A-level STEM curriculum through biology, chemistry, physics, D&T and computer science		15 days Jun 21 - Mar 22	£4,500

To apply for any of the above roles, please complete the [online application](#).

NB. Applications close mid-day 30 April 2021. Please gain permission from your headteacher before applying.

## Lead Practitioner Opportunities

Role	Focus	Activity	Days	Total Funding
<b>Science &amp; Technology cont'd:</b>				
Literacy for science - Secondary	Support schools to enhance the science curriculum through literacy		6 days Jun 21 - Mar 22	£1,800
Secondary computer science - curriculum	Support schools to develop the computer science curriculum	<ul style="list-style-type: none"> <li>Coordinating and developing professional e-learning programmes</li> <li>Creating online resources and materials</li> <li>Facilitating working groups of practitioners</li> </ul>	6 days Jun 21 - Mar 22	£1,800
Secondary computer science - PL	Develop professional learning to deepen subject knowledge and skills		15 days Jun 21 - Mar 22	£4,500
Secondary science	Support schools to develop resources for KS4 science		6 days Jun 21 - Mar 22	£1,800
Secondary D&T	Develop knowledge and understanding of Engineering, Manufacturing and Construction		10 days Jun 21 - Mar 22	£3,000

To apply for any of the above roles, please complete the [online application](#).

NB. Applications close mid-day 30 April 2021. Please gain permission from your headteacher before applying.

## Contact Us

Queries regarding	Name	Email	Please also follow us on Twitter:
Curriculum for Wales	Kathryn Lewis	<a href="mailto:kathryn.a.lewis@cscjes.org.uk">kathryn.a.lewis@cscjes.org.uk</a>	
Digital Learning	Matthew Humphreys	<a href="mailto:matthew.j.humphreys@cscjes.org.uk">matthew.j.humphreys@cscjes.org.uk</a>	<a href="https://twitter.com/CSC_DigiLearn">@CSC_DigiLearn</a>
Expressive Arts	Kathryn Lewis	<a href="mailto:kathryn.a.lewis@cscjes.org.uk">kathryn.a.lewis@cscjes.org.uk</a> <a href="mailto:marvin.thomas@cscjes.org.uk">marvin.thomas@cscjes.org.uk</a>	<a href="https://twitter.com/CSC_ExpArts">@CSC_ExpArts</a>
Foundation Phase	Ruth Best	<a href="mailto:ruth.best@cscjes.org.uk">ruth.best@cscjes.org.uk</a>	<a href="https://twitter.com/CSC_FP">@CSC_FP</a>
Health & Well-being	Sonja Barnard	<a href="mailto:sonja.barnard@cscjes.org.uk">sonja.barnard@cscjes.org.uk</a>	
Humanities	Sonja Barnard	<a href="mailto:sonja.barnard@cscjes.org.uk">sonja.barnard@cscjes.org.uk</a>	<a href="https://twitter.com/CSCHumanities">@CSCHumanities</a>
Languages, Literacy & Communication	Cathryn Billington-Richards	<a href="mailto:cathryn.billington-richards@cscjes.org.uk">cathryn.billington-richards@cscjes.org.uk</a>	<a href="https://twitter.com/CSC_Literacy">@CSC_Literacy</a> <a href="https://twitter.com/CSC_Cymraeg">@CSC_Cymraeg</a>
Mathematics & Numeracy	Glen Gilchrist	<a href="mailto:glen.gilchrist@cscjes.org.uk">glen.gilchrist@cscjes.org.uk</a> <a href="mailto:james.l.coll@cscjes.org.uk">james.l.coll@cscjes.org.uk</a> <a href="mailto:louise.davies@cscjes.org.uk">louise.davies@cscjes.org.uk</a>	<a href="https://twitter.com/CSC_STEM">@CSC_STEM</a>
Pedagogy and Teaching & Learning	Louise Muteham	<a href="mailto:louise.muteham@cscjes.org.uk">louise.muteham@cscjes.org.uk</a>	<a href="https://twitter.com/CSC_PL">@CSC_PL</a>
Science & Technology	Glen Gilchrist	<a href="mailto:glen.gilchrist@cscjes.org.uk">glen.gilchrist@cscjes.org.uk</a> <a href="mailto:sarah.summers@cscjes.org.uk">sarah.summers@cscjes.org.uk</a> <a href="mailto:susan.quirk@cscjes.org.uk">susan.quirk@cscjes.org.uk</a>	<a href="https://twitter.com/CSC_STEM">@CSC_STEM</a>
For any general queries, please contact	Kate Nash	<a href="mailto:kate.nash@cscjes.org.uk">kate.nash@cscjes.org.uk</a>	<a href="https://twitter.com/CSCJES">@CSCJES</a>